



IT RELOCATION-AS-A-SERVICE THE SURE WAY TO PROTECT YOUR BUSINESS

WHY LEAVE ANYTHING TO CHANCE?

The full cost of downtime really racks up. There's obvious things like missed revenue and lost productivity, not to mention equipment replacement.

Add to that the time it takes to restore applications and fix data loss after an interruption. Finally, there's the hard-to-quantify impact on brand, reputation and customer relationships. Gartner puts the average cost at around £4,300 per minute, or £258,000 per hour.

THE NEED FOR A DOWNTIME-FREE OFFICE MOVE

Sadly, the unexpected is happening more frequently and it's causing never-before-seen levels of disruption. To such an extent that affected businesses may not survive. While 2017 disaster recover (DR) statistics make tough reading, they underline the perils of disasters, including those arising from poorly planned office moves. Consider the following facts.



30% of businesses have no DR strategy in place

Many organisations have no documented business continuity plan or haven't even considered what technologies or procedures they would need to keep operations going.



90% of businesses without a DR plan will fail after a disaster

Less than 10% of companies survive a major disaster when they don't have a DR plan in place.



1 in 3 businesses were unprepared for disaster, despite having a plan

Traditional DR plans just didn't cut it.



12% of companies couldn't recover their data

This unfortunate outcome can be very costly – and damaging for a company's reputation.



Recovery efforts eat up 25% of staff time

Unplanned outages are a big drain on productivity. When they occur, staff are forced to shift their focus to restoring operations, which distracts them from business priorities.

MOVING WITHOUT HUGE DELAY AND DOWNTIME

So, it's never been more important to ensure all bases are covered.

For many organisations that means a strategy of having professional assistance when physically moving offices – without huge delay and downtime.

Ideal for planning and executing such a strategy, the fully managed IT Relocation Service from Creative will get you quickly up-and-running with significantly less cost and risk. We work with world-class partners such as Ricoh, Dell EMC, Cisco, VMware and NetApp. Here are some clients, among many, who have entrusted us with their office moves:



WHAT DOES OUR IT RELOCATION SERVICE INCLUDE?

Every client engagement is unique. At our initial meeting we'll discuss your key objectives, requirements and project milestones.

PLAN

- Existing infrastructure audit
- Infrastructure relocation
- Disaster recovery planning

1

DESIGN

- Validation and purchase of hardware and software
- Network infrastructure and system setup
- Testing and acceptance

2

IMPLEMENT

- Cable installation floor boxes and data points
- Reinstating telecom services
- Data migration, backup and recovery
- Go live
- Onsite support

3

BENEFITS

Creative's fully managed IT Relocation Service ensures:



Greater business agility



Better protection against loss of revenue and productivity



Less risk of disruption to operations and the customer experience

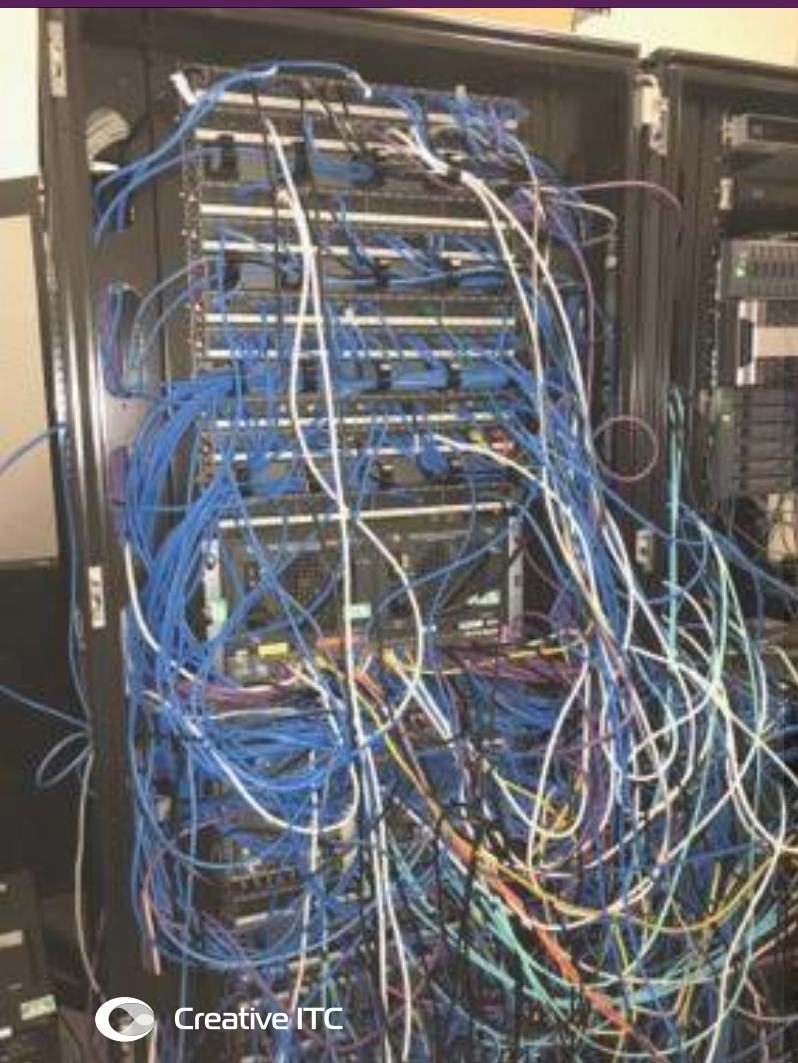


Additional time for IT to innovate

AFTER THE MOVE

An office move presents an opportunity to improve the overall condition of the IT estate and without exception all our previous customers have found their IT estate tidier and more streamlined than before the move, leading to easier management and cost savings.

FROM THIS...



TO THIS...



BUSINESS RELOCATION PLANNING

10 TOP TIPS FOR SUCCESSFULLY MOVING YOUR OFFICE

1

RISK MANAGEMENT

Carry out a detailed risk analysis, updating current disaster recovery plans to ensure business continuity and compliance in your new location.

2

AVAILABILITY AND RELIABILITY

Design a response around the internal issues that have the biggest impact in term of degrading quality of service and user experience for staff and customers.

3

PERFORMANCE

Zero-in on infrastructure aspects that work well and services that could be improved. Then factor in room for growth and new technologies to boost competitive edge.

4

SERVICE AND SUPPORT

Establish what levels of service and support will be required before, during and after the move – and how they'll be delivered.

5

EXISTING INFRASTRUCTURE

Identify must-have systems you need to relocate and what it will take to successfully integrate them into the new environment.

6

FLOOR PLANS

Agree individual desk layouts that will dictate IT and network requirements.

7

WIRELESS

Conduct a physical survey, or work from architects plans before designing your wireless network.

8

SERVERS, STORAGE AND NETWORKS

Determine what type of infrastructure is needed.

9

PRINTERS AND FAXES

Make best use of printers and fax connections in optimal locations.

10

POWER SUPPLY, FLOOR BOXES, DATA POINTS, CABLING AND WIRING CLOSETS

Pinpoint exactly what's needed and where.



Creative ITC

NEXT STEP

Take advantage of our expert-level accredited engineers and arrange your free one-day audit.

At the end you'll get a high-level plan confirming the critical equipment to be covered, along with advice on network cable patching and other key considerations.

No strings. No hard sell. No bill.

Contact us at
enquiries@creative-itc.com